



Freva lightweight insulation system



Ceiling insulation plates with resistant topcoats for use in stable and industrial buildings

**Also available:
A2 – not flammable**



Freva lightweight insulation system – thermal insulation of large ceilings in warehouses, industrial halls and farm buildings

Constant temperatures should be maintained in stable and hall buildings, regardless of the season. Correct ceiling insulation makes a significant contribution to regulating the climate. The Freva lightweight insulation system provides economical solutions for large stable and hall ceilings.

Areas of use

- Ceilings in pig pens, poultry houses and cowsheds
- Ceilings in warehouses for agricultural products
- Ceilings in industrial buildings and exhibition halls

Robust topcoats and energy-saving EPS insulation material

- White and glare-free visible surface with PVC, GRP or „anti-drip“ coating (aluminium foil + PE foam)
- Energy-saving insulating core from EPS 035 or 040 or the high-performance insulating material Neopor® 032
- Easy to clean; GRP surface also resistant to high-pressure cleaning!
- Resistant to moisture
- High chemical resistance
- High vapour barrier value
- Also available as fire protection panel with mineral fibre core and double-sided aluminium foil: A2 - not flammable!

Laying and installation

- Panels are mounted directly below the roof structure (e.g. under purlins or rafters) or horizontally below the roof beams
- Fast and rational mounting through low panel weight and large panel format
- Thorough coverage of the panel junctions and edges using plastic profiles protects against pests and rodents
- Offset laying of the panels provides a visually appealing joint pattern



Freva lightweight insulation system

Insulating cores	EPS 040, 035 or Neopor® 032 Fire protection class B1 - flame-retardant
Topcoats	PVC, GRP, GRP/GELCOAT, „Anti-drip“ coating (aluminium foil + PE foam)
Element thickness	40 to 200 mm
Element dimensions	Width 1200 mm, length variable
Element connection	Smooth edge (H-profile) Tongue and groove (T-profile)
Fire protection class in composite	B2 - DIN 4102, Part 1

Freva lightweight insulation system

Neopor® 032 + anti-drip coating (aluminium foil + PE foam), thickness: 100 mm, e.g. for use in vegetable and potato warehouses



Ceiling in the pig barn:
double-sided PVC 0.25 mm,
fixing with mounting screws



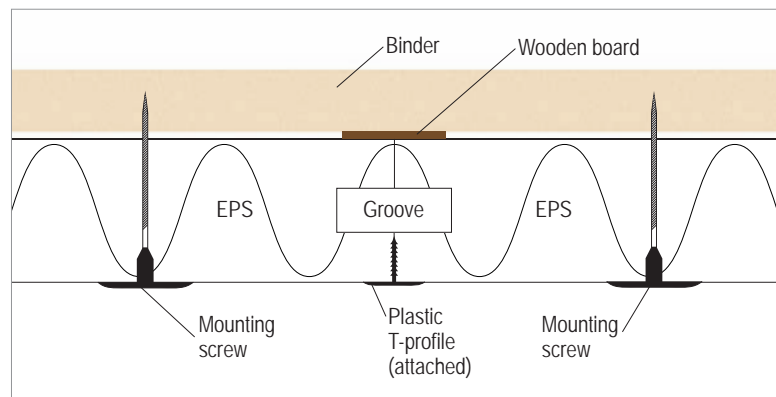
Freva lightweight insulation system

Freva lightweight insulation system Variant »tongue and groove«

Cold spot-free ceiling insulation with tongue and groove system

- EPS ceiling insulation plates from a thickness of 80 mm
- Cold spot-free tongue and groove connection prevents the development of condensation on ceiling panels and profiles
- Joint transition closed on the visible side with an attached plastic T-profile
- Rear coverage of the panel transition possible with a wooden board
- Full coverage of the joint junctions and cut edges protects against pests and rodents
- Variable panel lengths
- The panels are fixed, e.g. directly to the wooden substructure, using mounting screws with washers

Freva lightweight insulation system
Variant »tongue and groove« with rear wooden board for sealing the joints



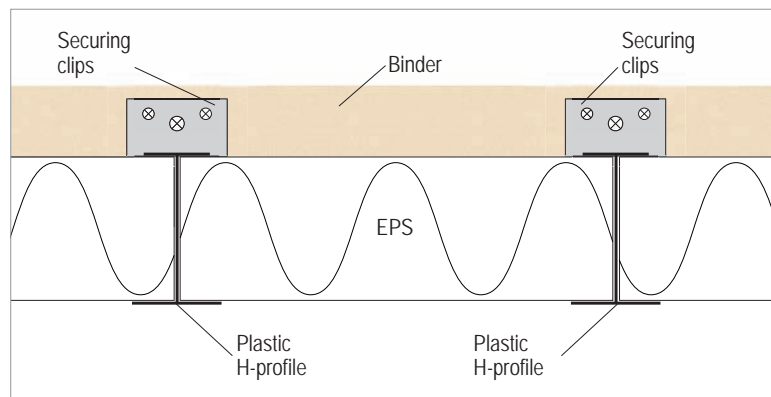
Freva lightweight insulation system

Freva lightweight insulation system Variant »H-Profile«

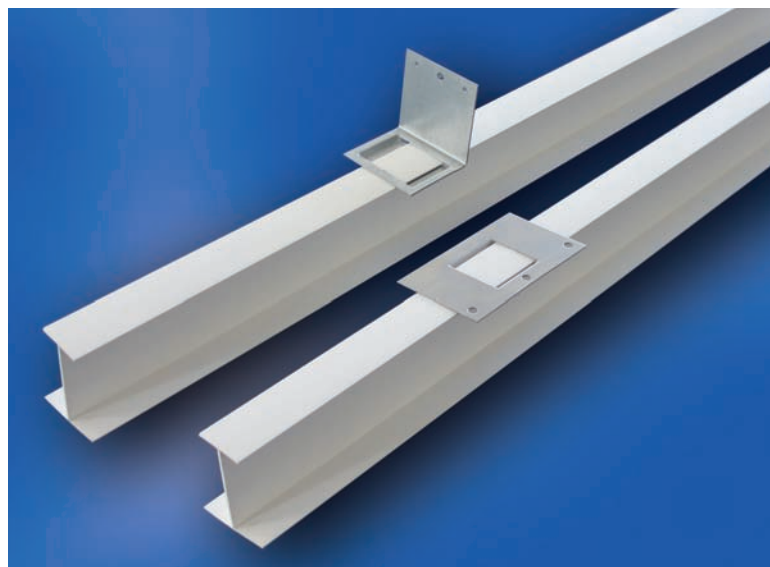
Reliable ceiling insulation with plastic H-profile and securing clips

- EPS ceiling insulation plates from a thickness of 20 mm with smooth edge
- Full coverage of the joint transitions and cut edges is guaranteed through H-profiles and U-profiles
- Variable plate lengths
- Mounting done with stainless steel securing clips
- Recommended distance between the securing clips: approx. 1.20 m

Freva lightweight insulation system Variant »H-profile« with securing clips



Accessories: Plastic H-profile and stainless steel securing clips – tilted or flat



Freva hall insulation system »AL/MF«

Fire protection panels with mineral fibre core and double-sided aluminium topcoat

The Freva hall insulation system »AL/MF« combines efficient ceiling insulation with simultaneous fire protection. The insulation panel has a stone wool core with vertical fibres, and is covered on both sides with aluminium foil 0.1 mm. In addition to outstanding insulation values, the panel also has optimum fire behaviour, and is, according to DIN EN 13501-1 in fire protection class A2 »not flammable«. In the event of fire, this can be significant protection for persons, animals and buildings.

The fire protection panels for stable and hall ceilings:

- Energy-saving insulating core
- Fire prevention and additional soundproofing
- White, glare-free, aluminium surface, easy to clean
- Resistant to moisture
- Simple and fast mounting through manageable panel format
- Fixing with metal plate anchors
- Joint coverage with plastic T-profile, wall and edge finish with plastic U-profile or bracket

Freva hall insulation system »AL/MF«

Insulating core	Mineral wool with vertical fibre
Topcoat	double-sided 0.1 mm aluminium rough grain foil, white
Element thickness	50 / 100 mm
Element dimensions	1200 x 2500 mm (coverage dimensions)
Element connection	Smooth edge (plastic T-profile) Tongue and groove from 100 mm
Fire protection class	A2 - not flammable DIN EN 13501-1

Freva hall insulation system laying in offset; full metal anchors with plastic cap for fixing; joint cover with an attached plastic T-profile

Freva Sandwichsysteme GmbH

Industriestraße 3
34537 Bad Wildungen

Tel: +49 (0) 5621 965679-0
Fax: +49 (0) 5621 965679-9
Email: info@freva.de
Website: www.freva.de

